

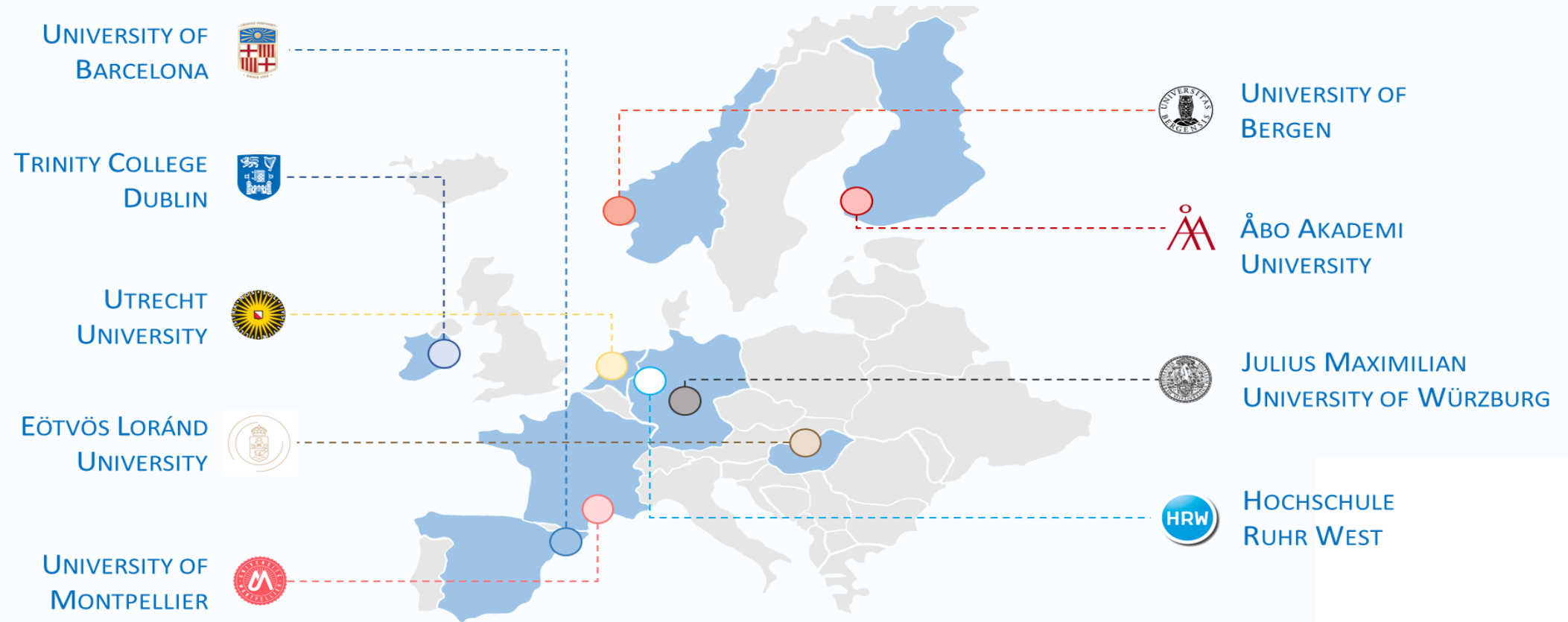
From Project Funding to Sustainable Integration: The CHARM-EU R&I Journey

Sergio Villanueva Baselga, University of Barcelona, CHARM-EU Director
02/03/2025, University of Leipzig, Arqus Annual Conference



**Co-funded by
the European Union**

CHARM-EU Alliance



Co-funded by
the European Union



CHARM-EU Aim and Missions



To generate a new University model that fosters **transdisciplinarity**, **interculturality**, and **inclusivity** in all missions.

- **Education:** CHARM-EU has defined an educational model that is challenge-led, research-based, student-centred, and mobility-embedded:
 - Joint-MSc in Global Challenges for Sustainability (90→120ECTS)
 - 2 more joint-MSc in design phase (EMDM) + 1 joint PhD programme in design
 - Microcredentials, Online Courses Catalogue, Transversal short-courses
- **Relation to society:** CHARM-EU has established mechanisms for seamless flux of challenges from society to university
 - Challenges platform, Innovation hub, start-up competition
- **Attractive careers:** CHARM-EU is developing mechanism to improve the quality and wellbeing of academic careers:
 - Staff mobilities, leadership school, Diversity, Equity and Inclusivity (DEI) plan
- **Research:** CHARM-EU promotes excellent transdisciplinary research

CHARM-EU Research

Mission: How did it start?



TORCH (SwafS-2021-2023)

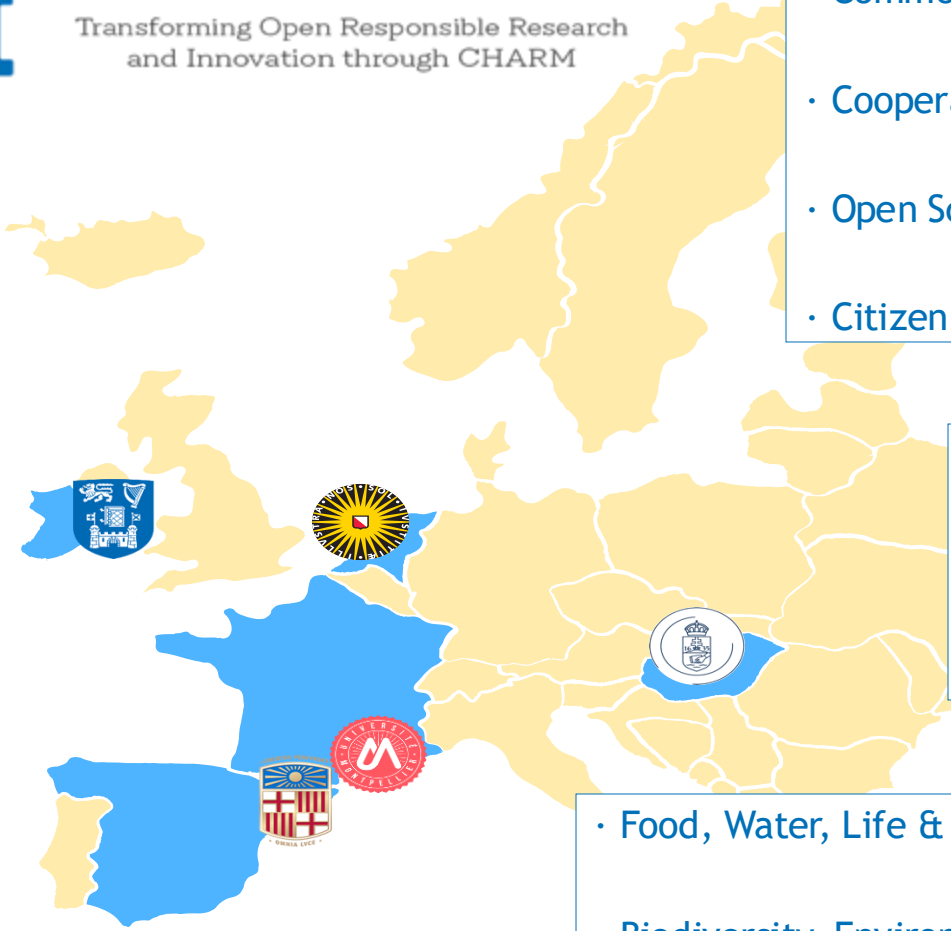


TORCH

Transforming Open Responsible Research
and Innovation through CHARM

TORCH MEMBERS

- University of Barcelona
- Trinity College Dublin
- Utrecht University
- Eötvös Loránd University
- University of Montpellier



- Common R&I Agenda and Action Plan
- Cooperation with Non-Academic Actors
- Open Science
- Citizen Science & Public Engagement

TRANSFORMATIONAL MODULES

- Inter- & Trans-Disciplinarity
- Gendered Innovation
- Ethics & Integrity

CROSS CUTTING PRINCIPLES

- Food, Water, Life & Health
- Biodiversity, Environment, Climate Change
- (In)Equality, Economic Growth, Governance, Migration

KNOWLEDGE THEMATIC AREAS



This project has received funding from
the European Union's Horizon 2020
research and innovation programme
under grant agreement No 101017229.

TORCH Objective and Expected Results



Objective

To build up the R&I dimension of the CHARM-EU through the development of a challenge-driven transformative agenda based on a transdisciplinary and intercultural Responsible Research and Innovation (RRI) vision.

Expected Results & Impact

- Best practices and GAP analysis for each transformational module in each university
- Common R&I agenda 2023-2026 (and roadmap)
- KCTs formed for mid-term impact
- Action Plans for the long-term impact
- The R&I governance model for CHARM-EU to guarantee sustainability

TORCH – Common Research Agenda

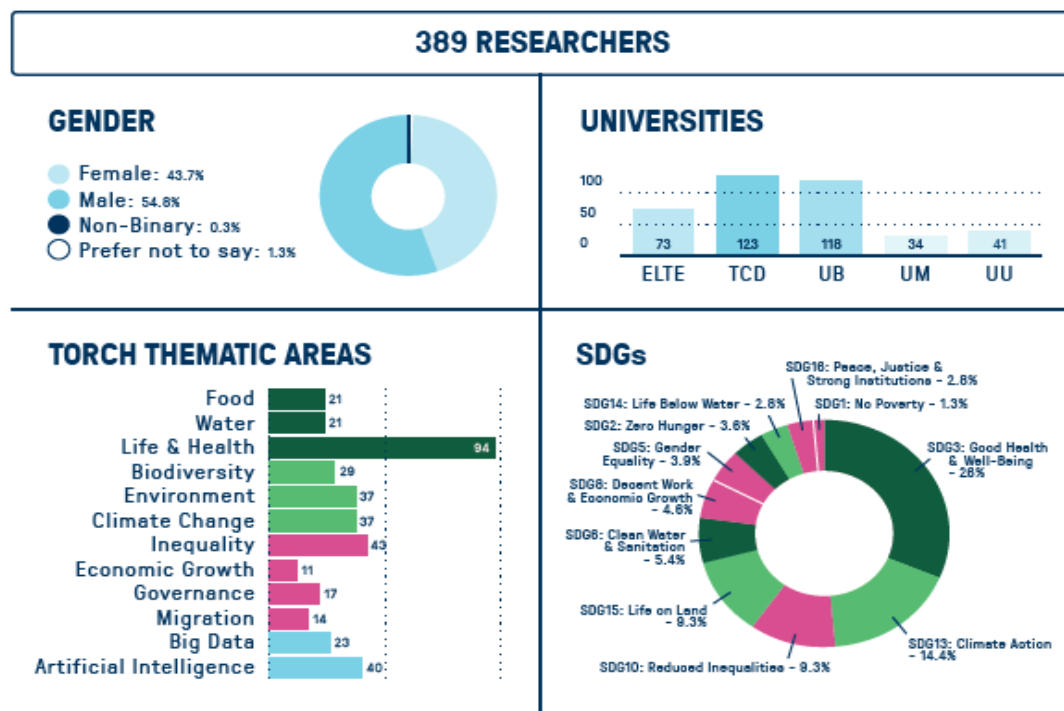


1 A Multi-Step Collaborative Process to Define Priorities and Develop Research Challenges



STEP 1. COLLATING RESEARCH INTERESTS

Questionnaire 1: research field; expertise; interests linked to TORCH thematic areas and SDGs.



FIELDS OF SCIENCE

1. Natural Sciences
2. Engineering & Technology
3. Medical & Health Sciences
4. Agricultural Sciences
5. Social Sciences
6. Humanities



STEP 2. INSTITUTIONAL VALIDATION OF PRIORITIES BASED ON STEP 1 RESULTS AND UNIVERSITIES' STRATEGIC PLANS

Three SDGs selected.



STEP 3. GROUPING RESEARCHERS AROUND SDGs

Questionnaire 2: individual research proposals linked to selected SDGs.

Proposals grouped into general topics to form 3 multidisciplinary expert focus groups which then define specific research challenges.



STEP 4. DRAFTING RESEARCH CHALLENGES

Six proposals by multidisciplinary teams.

TORCH Research Challenges



TORCH Research Challenges and KCTs



TORCH Research Challenges (submission status)



UB

SDG3-C1

ACTIVE: Adult Child and Teenage participation In physical actiVity across Europe

Discarded
Target: Horizon Europe

UM

SDG3-C2

Prevention and preparedness of negative effects of climate change on vector-borne infectious diseases

Discarded
Target: Horizon Europe



TCD

SDG10-C1

Coping with digitalization and the transformation of the world of work as a new source of inequalities

Submitted (not granted)
Target: Horizon Europe

Alliance

SDG10-C2

Designing better universities to fight against inequalities

In preparation
Target: MSCA (HE) Staff Exchanges



ELTE

SDG13-C1

Preventive Water Sustainable Management of Freshwater resources within a global change frameset (PWSM)

Submitted and granted
Target: Water4All

UU

SDG13-C2

Mapping Risks, Joining Funds, Taking Actions – Fostering Nature-based Solutions to Mitigate Climate-related Hazards

Submitted
Target: MSCA (HE) Doctoral Networks

POLICIES/STRATEGIES (Priority Areas)

PILOTS

ACTION PLANS

PARTNERS

University of Barcelona
Trinity College Dublin
Utrecht University
Eötvös Loránd University
University of Montpellier

Working Towards
Reforming Research
Assessment

AP1: Alliance Manifesto on Research
Assessment

Fostering Equality,
Diversity and inclusivity

P1: Enhanced equality data

AP2: R&I section of the CHARM-EU Inclusivity
Plan

Championing Open Science

P2: Open Science Rewards & Recognition
Toolbox

P3: Citizen Science Training

P4: Open Science Training

To be included in Strategies: Institution-level
linking Open Science with Equality, Diversity &
Inclusivity.

Promoting
Inter/Transdisciplinary
Research Driven by Societal
Challenges

P5: Joint Support Strategy for Research
Projects

AP3: Joint Support Strategy for Research
Projects

Intensifying R&I
Cooperation Between
Universities

P6: CHARM-EU Research & Innovation Days

P7: Virtual TTOs network

AP4: Expedited Research Ethics Approval
Pathway

AP5: CHARM-EU Research Infrastructures
Catalogue

**Once TORCH finished: how
is R&I Mission maintained?**



CHARM-EU R&I Mission



CHARM-EU keeps its R&I mission alive thanks to the commitment (and internal funding) of the member universities through:

1. A **permanent R&I task force** aligned with the TORCH Action Plans
2. A **Vice-rectors of Research Board** that monitors R&I task force
3. The inclusion of an ambitious strategy for R&I in the **CHARM-EU Strategic Plan**

R&I Actions - Coordinators & Participants



Find the participants contacts list at [R&I Actions - Subgroups & Teams.xlsx](#)

Action	Coordinator	Links with WP?
A1 - CHARM-EU matchmaking events	HRW + UiB	WP9
A2 - Joint Support Strategy for Research Projects (network of research support offices + joint coordination)	ELTE + ÅAU (+ JMU + UiB)	WP2 + WP10 (?)
A3 - Open Science and Citizen Science Training	ELTE (OS) + UB (CS)	WP12
A4 - Open Science Award + Innovation Award	ELTE + UM	WP10 + WP15
A5 - Alliance Manifesto on Research Assessment	UU + JMU	WP10
A6 - Creation of a virtual network of TTOs	UM	WP14
A7 - Charting current equality data collection practices in CHARM-EU institutions	TCD	DEI
A8 - R&I section of the CHARM-EU Inclusivity Plan	ELTE	DEI

CHARM-EU R&I Strategic Objectives



- Create an innovative and transdisciplinary co-production environment and meeting places for CHARM-EU researchers → matchmaking to enhance international cooperation within CHARM-EU thematic research areas (and beyond) [no. of new research networks within CHARM-EU, no of researchers trained in citizen science, no of research projects applying citizen science]
- Encourage and support common research proposals between CHARM-EU partners (and other societal and university partners) → increased number of (European level) research proposals [no. of common proposals/funded projects within CHARM-EU]
- Develop and enhance technology transfer processes within the alliance → TTO network and strategy [TTO/innovation support strategy and network]
- Advance CHARM-EU-based R&I reforms on issues common to all universities → good practice sharing, common training materials and (on-line) courses [research policy and practice materials and courses]
- Effectively integrate the R&I dimension and strategy into CHARM-EU's governance structure [achieve a better balance and interconnection between education and research]
- Promote smart and efficient use of existing research infrastructures between partners when feasible → up-dated catalogue of and process (including costs) for common usage of infrastructure [research infrastructure catalogue and sharing process]

Difficulties and Challenges



Impossibility to fund research activities with E+ grant:

- Low motivation and incentives of people involved
- Rewards and prizes are not economic
- Difficulties in finding procedures for seed funding programmes

Complexity in finding agreement in strategic areas:

- Infrastructure catalogue
- Joint Virtual Research Support Office
- Common ethical procedures

Moltes gràcies
Muchas gracias
Fòrça gràcies
Many thanks
Go raibh maith agat
Hartelijk dank
Merci beaucoup
Nagyon köszönöm
Vielen Dank
Tack så mycket
Kiitos paljon
Tusen takk



CHARM-EU

Follow us on:

 **@charm_eu**

 **@charm.eu**

 **@charmeuropeanuniversity**

 **@/school/charm-eu**

www.charm-eu.eu

R&I Dimension Benefits: Strategy

- Education and research cannot be separated in the CHARM-EU partner universities; R&I is part of our alliance strategy as a challenge-driven, accessible, research-based and mobile European University.
- European University Alliances are long-term strategic commitments by the EC and member universities – commitments that should apply across all three university missions: research & innovation, education and societal interaction.
- Long-term & multi-mission cooperation within CHARM-EU will make member universities stronger and better prepared for international/European cooperation through common interest monitoring and a shared knowledge base.
- CHARM-EU can become a strong contributor in the implementation of European research policy (ERA policy framework).
- CHARM-EU's focus on sustainability, along with its transdisciplinary and challenge-driven approach, will contribute to prompt institutional transformation within strategic areas in the partner universities and ultimately reflect on research excellence in Europe.



R&I Dimension Benefits: Collaboration

- A successful R&I dimension will increase **challenge-driven** and **transdisciplinary** collaboration for social impact at a European scale, with our shared strategy focusing on addressing **societal challenges** and **sustainability** (for instance, within the SDGs framework the EU Missions or the European Green Deal, but not restricted to that).
- We can develop collaborative research projects, with engagement from all or many member universities, building long-term research cooperation based on consistent relationships between PIs.
- The potential scope of common research activities highlights a need for an alliance-level network of research support units (2024-2025) that can be further developed into a Joint Virtual Research Support Office (2025–2027).
- A support network will enhance opportunities for researchers to find new partners for research proposals, especially in research fields that require a transdisciplinary approach.
- A stable collaborative research environment can be created by continued exchange of best practices in key areas common to all members (e.g. career assessment, open science, citizen science, EDI, etc.), which will also contribute to reinforcing Responsible R&I internally within all partners.

